

Acta Crystallographica Section E

Structure Reports

Online

ISSN 1600-5368

1-Benzoyl-4-(2-nitrophenyl)-
semicarbazide

Ting Sun, Gong-Chun Li, Jing Li and Feng-Ling Yang*

College of Chemistry and Chemical Engineering, Xuchang University, Xuchang, Henan Province 461000, People's Republic of China
Correspondence e-mail: actaeli@gmail.com

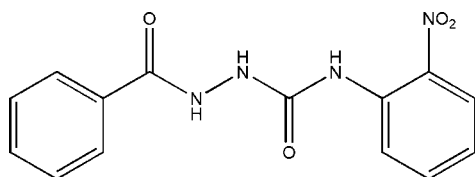
Received 6 April 2010; accepted 8 April 2010

Key indicators: single-crystal X-ray study; $T = 113$ K; mean $\sigma(\text{C}-\text{C}) = 0.003$ Å; R factor = 0.028; wR factor = 0.059; data-to-parameter ratio = 7.8.

The title compound, $\text{C}_{14}\text{H}_{12}\text{N}_4\text{O}_4$, was prepared by the reaction of 2-nitrophenyl isocyanate with benzoylhydrazine. The dihedral angle between the rings is $71.49(6)$ Å. The molecular conformation is stabilized by an intramolecular $\text{N}-\text{H}\cdots\text{O}$ hydrogen bond, generating an $S(6)$ ring. The crystal packing shows $\text{N}-\text{H}\cdots\text{O}$ hydrogen bonds.

Related literature

For the bioactivity of urea derivatives, see: Yip *et al.* (1986); Liu *et al.* (2005).



Experimental

Crystal data

$\text{C}_{14}\text{H}_{12}\text{N}_4\text{O}_4$
 $M_r = 300.28$
Monoclinic, Pc
 $a = 4.655(2)$ Å
 $b = 15.020(7)$ Å
 $c = 10.005(5)$ Å
 $\beta = 97.954(7)^\circ$

$V = 692.9(5)$ Å³
 $Z = 2$
Mo $K\alpha$ radiation
 $\mu = 0.11$ mm⁻¹
 $T = 113$ K
 $0.20 \times 0.16 \times 0.12$ mm

Data collection

Rigaku Saturn 724 CCD
area-detector diffractometer
Absorption correction: multi-scan
(*CrystalClear*; Rigaku/MS, 2005)
 $T_{\min} = 0.979$, $T_{\max} = 0.987$

5816 measured reflections
1652 independent reflections
1383 reflections with $I > 2\sigma(I)$
 $R_{\text{int}} = 0.033$

Refinement

$R[F^2 > 2\sigma(F^2)] = 0.028$
 $wR(F^2) = 0.059$
 $S = 0.96$
1652 reflections
212 parameters
2 restraints

H atoms treated by a mixture of independent and constrained refinement
 $\Delta\rho_{\text{max}} = 0.17$ e Å⁻³
 $\Delta\rho_{\text{min}} = -0.16$ e Å⁻³

Table 1

Hydrogen-bond geometry (Å, °).

$D-H\cdots A$	$D-H$	$H\cdots A$	$D\cdots A$	$D-H\cdots A$
$\text{N2}-\text{H2A}\cdots\text{O3}^i$	0.80 (2)	2.10 (2)	2.844 (2)	154.8 (18)
$\text{N3}-\text{H3A}\cdots\text{O4}^{ii}$	0.90 (2)	1.95 (2)	2.835 (2)	167 (2)
$\text{N1}-\text{H1}\cdots\text{O2}$	0.83 (2)	2.13 (2)	2.640 (2)	119.8 (17)
$\text{N1}-\text{H1}\cdots\text{O3}^i$	0.83 (2)	2.32 (2)	2.987 (2)	138.7 (19)

Symmetry codes: (i) $x - 1, y, z$; (ii) $x, -y + 1, z + \frac{1}{2}$.

Data collection: *CrystalClear* (Rigaku/MS, 2005); cell refinement: *CrystalClear*; data reduction: *CrystalClear*; program(s) used to solve structure: *SHELXS97* (Sheldrick, 2008); program(s) used to refine structure: *SHELXL97* (Sheldrick, 2008); molecular graphics: *XP* (Sheldrick, 2008); software used to prepare material for publication: *SHELXL97*.

This work was supported by the Natural Science Foundation of Henan Province, China (grant No. 082300420110) and the Natural Science Foundation of Henan Province Education Department, China (grant No. 2007150036).

Supplementary data and figures for this paper are available from the IUCr electronic archives (Reference: BT5244).

References

- Liu, X. P., Liu, A. P., Lin, L. Z., Wei, Z. Z., Huang, L. & Yu, K. (2005). *Mod. Agrochem.* **4**, 14–16.
Rigaku/MS (2005). *CrystalClear*. Rigaku/MS, The Woodlands, Texas, USA.
Sheldrick, G. M. (2008). *Acta Cryst.* **A64**, 112–122.
Yip, W. K. & Yang, S. F. (1986). *Plant Physiol.* **80**, 515–519.

supplementary materials

Acta Cryst. (2010). E66, o1113 [doi:10.1107/S1600536810013048]

1-Benzoyl-4-(2-nitrophenyl)semicarbazide

T. Sun, G.-C. Li, J. Li and F.-L. Yang

Comment

Urea derivatives are very interesting reagents due to their useful properties and important medical and biological applications. For example, aryl urea derivatives have been found to inhibit cell division as weedicides, and homologous aryl urea derivatives have also been researched as antibacterial activity. Thidiazuron, a substituted heterocyclic urea compound, mimicked the effect of benzyladenine(BA) in the Ca^{2+} + cytokinin system and the IAA + cytokinin systems systems. (Yip *et al.*, 1986). Recently, better activity of sectiona benzoyl urea derivatives were reported. (Liu *et al.*, 2005). In order to discover further biologically active urea compounds, the title compound was synthesized and its crystal structure was determined (Fig. 1). The molecular conformation is stabilized by an intramolecular N—H \cdots O hydrogen bond. The crystal packing shows N—H \cdots O hydrogen-bonds. (Fig. 2).

Experimental

2-nitrophenyl isocyanate(0.164 g, 1 mmol) and benzoyl hydrazine (0.136 g, 1 mmol) were milled and mixed thoroughly in an agate mortar. Then the mixture was put into a beaker and irradiated by microwave for 1 min. After the reaction was completed, the resulting mixture was dissolved in 95% ethanol and filtrated. The products separated and were collected by filtration. The title compound was recrystallized from ethanol and single crystals were obtained by slow evaporation.

Refinement

In the absence of anomalous scatterers, the absolute structure could not be determined and, therefore, Friedel pairs were merged. All H atoms bonded to C atoms were placed in calculated positions, with C—H = 0.95 Å, and included in the refinement using a riding model, with $U_{\text{iso}}(\text{H}) = 1.2U_{\text{eq}}(\text{C})$. H atoms bonded to N were freely refined.

Figures

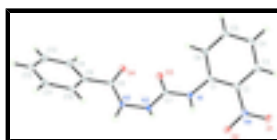


Fig. 1. The asymmetric unit of the title compound with displacement ellipsoids drawn at the 30% probability level.

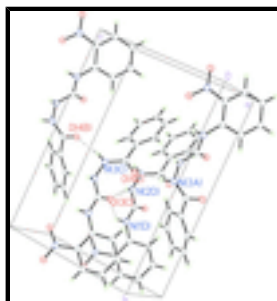


Fig. 2. The packing diagram of the title compound. Intermolecular hydrogen bonds are shown as dashed lines.

1-Benzoyl-4-(2-nitrophenyl)semicarbazide

Crystal data

C₁₄H₁₂N₄O₄

$M_r = 300.28$

Monoclinic, *Pc*

Hall symbol: P -2yc

$a = 4.655$ (2) Å

$b = 15.020$ (7) Å

$c = 10.005$ (5) Å

$\beta = 97.954$ (7)°

$V = 692.9$ (5) Å³

$Z = 2$

$F(000) = 312$

$D_x = 1.439$ Mg m⁻³

Mo $K\alpha$ radiation, $\lambda = 0.71073$ Å

Cell parameters from 2582 reflections

$\theta = 1.4$ – 27.9 °

$\mu = 0.11$ mm⁻¹

$T = 113$ K

Prism, colorless

$0.20 \times 0.16 \times 0.12$ mm

Data collection

Rigaku Saturn 724 CCD area-detector diffractometer

Radiation source: fine-focus sealed tube graphite

Detector resolution: 14.68 pixels mm⁻¹

ω and φ scans

Absorption correction: multi-scan (CrystalClear; Rigaku/MSC, 2005)

$T_{\min} = 0.979$, $T_{\max} = 0.987$

5816 measured reflections

1652 independent reflections

1383 reflections with $I > 2\sigma(I)$

$R_{\text{int}} = 0.033$

$\theta_{\max} = 27.9$ °, $\theta_{\min} = 1.4$ °

$h = -4 \rightarrow 6$

$k = -16 \rightarrow 19$

$l = -13 \rightarrow 12$

Refinement

Refinement on F^2

Least-squares matrix: full

$R[F^2 > 2\sigma(F^2)] = 0.028$

$wR(F^2) = 0.059$

$S = 0.96$

1652 reflections

212 parameters

2 restraints

Primary atom site location: structure-invariant direct methods

Secondary atom site location: difference Fourier map

Hydrogen site location: inferred from neighbouring sites

H atoms treated by a mixture of independent and constrained refinement

$w = 1/[\sigma^2(F_o^2) + (0.0305P)^2]$

where $P = (F_o^2 + 2F_c^2)/3$

$(\Delta/\sigma)_{\max} = 0.007$

$\Delta\rho_{\max} = 0.17$ e Å⁻³

$\Delta\rho_{\min} = -0.16$ e Å⁻³

Extinction correction: SHELXL97 (Sheldrick, 2008),

$F_c^* = kFc[1 + 0.001xFc^2\lambda^3/\sin(2\theta)]^{-1/4}$

Extinction coefficient: 0.044 (4)

Special details

Geometry. All esds (except the esd in the dihedral angle between two l.s. planes) are estimated using the full covariance matrix. The cell esds are taken into account individually in the estimation of esds in distances, angles and torsion angles; correlations between esds in cell parameters are only used when they are defined by crystal symmetry. An approximate (isotropic) treatment of cell esds is used for estimating esds involving l.s. planes.

Refinement. Refinement of F^2 against ALL reflections. The weighted R -factor wR and goodness of fit S are based on F^2 , conventional R -factors R are based on F , with F set to zero for negative F^2 . The threshold expression of $F^2 > \sigma(F^2)$ is used only for calculating R -factors(gt) etc. and is not relevant to the choice of reflections for refinement. R -factors based on F^2 are statistically about twice as large as those based on F , and R -factors based on ALL data will be even larger.

Fractional atomic coordinates and isotropic or equivalent isotropic displacement parameters (\AA^2)

	<i>x</i>	<i>y</i>	<i>z</i>	$U_{\text{iso}}^*/U_{\text{eq}}$
O1	0.4760 (3)	-0.01804 (9)	0.99297 (16)	0.0318 (4)
O2	0.4185 (3)	0.12193 (9)	1.02923 (16)	0.0305 (4)
O3	1.1178 (3)	0.32395 (8)	0.92954 (15)	0.0224 (3)
O4	0.8286 (3)	0.48594 (9)	0.76324 (14)	0.0256 (3)
N1	0.6951 (4)	0.24346 (11)	0.90518 (17)	0.0191 (4)
H1	0.539 (5)	0.2410 (13)	0.936 (2)	0.021 (6)*
N2	0.6976 (4)	0.38858 (10)	0.97176 (17)	0.0172 (3)
H2A	0.523 (5)	0.3870 (12)	0.958 (2)	0.014 (5)*
N3	0.8310 (3)	0.47099 (10)	0.98749 (17)	0.0183 (3)
H3A	0.853 (5)	0.4899 (15)	1.073 (2)	0.031 (6)*
N4	0.5259 (3)	0.06040 (10)	0.97133 (17)	0.0220 (4)
C1	0.7987 (3)	0.16832 (12)	0.8453 (2)	0.0169 (4)
C2	0.7208 (4)	0.08059 (13)	0.8735 (2)	0.0186 (4)
C3	0.8283 (4)	0.00766 (13)	0.8095 (2)	0.0238 (5)
H3	0.7730	-0.0509	0.8310	0.029*
C4	1.0138 (4)	0.02023 (13)	0.7156 (2)	0.0244 (5)
H4	1.0907	-0.0293	0.6734	0.029*
C5	1.0872 (4)	0.10670 (13)	0.6832 (2)	0.0228 (4)
H5	1.2108	0.1160	0.6165	0.027*
C6	0.9833 (4)	0.17889 (12)	0.7465 (2)	0.0181 (4)
H6	1.0377	0.2372	0.7229	0.022*
C7	0.8559 (4)	0.31947 (12)	0.93330 (19)	0.0165 (4)
C8	0.9025 (4)	0.51379 (12)	0.8784 (2)	0.0189 (4)
C9	1.0848 (4)	0.59575 (12)	0.9075 (2)	0.0202 (4)
C10	1.2623 (4)	0.60775 (13)	1.0298 (2)	0.0228 (4)
H10	1.2638	0.5648	1.0996	0.027*
C11	1.4379 (4)	0.68291 (13)	1.0494 (2)	0.0297 (5)
H11	1.5598	0.6910	1.1328	0.036*
C12	1.4367 (5)	0.74538 (13)	0.9493 (3)	0.0337 (5)
H12	1.5576	0.7964	0.9636	0.040*
C13	1.2588 (5)	0.73400 (15)	0.8273 (3)	0.0404 (6)
H13	1.2560	0.7776	0.7583	0.048*
C14	1.0851 (5)	0.65894 (14)	0.8064 (2)	0.0339 (5)

supplementary materials

H14 0.9656 0.6507 0.7224 0.041*

Atomic displacement parameters (\AA^2)

	U^{11}	U^{22}	U^{33}	U^{12}	U^{13}	U^{23}
O1	0.0371 (9)	0.0231 (8)	0.0370 (10)	-0.0064 (6)	0.0116 (7)	0.0067 (7)
O2	0.0351 (8)	0.0255 (8)	0.0349 (10)	0.0007 (7)	0.0189 (7)	0.0013 (7)
O3	0.0137 (6)	0.0229 (7)	0.0310 (8)	-0.0021 (5)	0.0050 (5)	-0.0033 (6)
O4	0.0360 (8)	0.0254 (7)	0.0149 (8)	-0.0060 (6)	0.0018 (6)	-0.0025 (6)
N1	0.0144 (8)	0.0190 (8)	0.0256 (10)	-0.0022 (6)	0.0089 (7)	-0.0017 (7)
N2	0.0137 (8)	0.0160 (8)	0.0223 (9)	-0.0024 (6)	0.0036 (6)	-0.0027 (7)
N3	0.0224 (8)	0.0174 (8)	0.0156 (9)	-0.0034 (6)	0.0045 (6)	-0.0038 (7)
N4	0.0203 (8)	0.0228 (9)	0.0224 (10)	-0.0023 (7)	0.0007 (7)	0.0040 (7)
C1	0.0114 (9)	0.0190 (9)	0.0196 (11)	-0.0001 (7)	-0.0002 (7)	-0.0003 (8)
C2	0.0158 (9)	0.0210 (9)	0.0185 (10)	-0.0010 (7)	0.0011 (7)	0.0002 (8)
C3	0.0229 (10)	0.0180 (9)	0.0295 (12)	0.0005 (8)	0.0002 (8)	-0.0009 (8)
C4	0.0233 (10)	0.0219 (10)	0.0281 (12)	0.0034 (8)	0.0038 (8)	-0.0063 (9)
C5	0.0191 (10)	0.0281 (11)	0.0217 (11)	-0.0005 (8)	0.0043 (8)	-0.0013 (9)
C6	0.0150 (8)	0.0198 (10)	0.0199 (11)	-0.0006 (7)	0.0033 (7)	0.0012 (8)
C7	0.0166 (9)	0.0201 (9)	0.0130 (10)	-0.0006 (7)	0.0024 (7)	0.0018 (7)
C8	0.0205 (10)	0.0182 (9)	0.0181 (10)	0.0011 (7)	0.0033 (7)	-0.0001 (8)
C9	0.0241 (10)	0.0174 (9)	0.0201 (10)	-0.0005 (8)	0.0066 (8)	-0.0016 (8)
C10	0.0245 (10)	0.0216 (10)	0.0228 (11)	-0.0028 (8)	0.0055 (8)	-0.0010 (8)
C11	0.0263 (11)	0.0307 (11)	0.0324 (13)	-0.0058 (9)	0.0049 (9)	-0.0086 (10)
C12	0.0414 (13)	0.0227 (11)	0.0395 (15)	-0.0104 (9)	0.0148 (10)	-0.0086 (10)
C13	0.0603 (16)	0.0267 (12)	0.0353 (16)	-0.0126 (11)	0.0107 (12)	0.0065 (10)
C14	0.0503 (13)	0.0265 (11)	0.0238 (13)	-0.0079 (10)	0.0012 (10)	0.0028 (9)

Geometric parameters (\AA , $^\circ$)

O1—N4	1.226 (2)	C4—C5	1.393 (3)
O2—N4	1.233 (2)	C4—H4	0.9500
O3—C7	1.227 (2)	C5—C6	1.377 (3)
O4—C8	1.229 (2)	C5—H5	0.9500
N1—C7	1.373 (2)	C6—H6	0.9500
N1—C1	1.395 (2)	C8—C9	1.500 (3)
N1—H1	0.83 (2)	C9—C14	1.387 (3)
N2—C7	1.359 (2)	C9—C10	1.390 (3)
N2—N3	1.384 (2)	C10—C11	1.392 (3)
N2—H2A	0.80 (2)	C10—H10	0.9500
N3—C8	1.348 (3)	C11—C12	1.371 (3)
N3—H3A	0.90 (2)	C11—H11	0.9500
N4—C2	1.456 (3)	C12—C13	1.388 (3)
C1—C6	1.405 (3)	C12—H12	0.9500
C1—C2	1.406 (3)	C13—C14	1.386 (3)
C2—C3	1.396 (3)	C13—H13	0.9500
C3—C4	1.374 (3)	C14—H14	0.9500
C3—H3	0.9500		

C7—N1—C1	123.34 (16)	C5—C6—C1	121.51 (18)
C7—N1—H1	116.3 (14)	C5—C6—H6	119.2
C1—N1—H1	119.8 (14)	C1—C6—H6	119.2
C7—N2—N3	117.57 (16)	O3—C7—N2	123.16 (16)
C7—N2—H2A	120.0 (14)	O3—C7—N1	123.73 (17)
N3—N2—H2A	118.2 (13)	N2—C7—N1	113.05 (15)
C8—N3—N2	119.45 (16)	O4—C8—N3	121.89 (17)
C8—N3—H3A	128.0 (15)	O4—C8—C9	122.59 (17)
N2—N3—H3A	112.5 (15)	N3—C8—C9	115.49 (17)
O1—N4—O2	122.58 (17)	C14—C9—C10	119.50 (18)
O1—N4—C2	118.03 (17)	C14—C9—C8	118.53 (18)
O2—N4—C2	119.39 (15)	C10—C9—C8	121.90 (17)
N1—C1—C6	119.49 (16)	C9—C10—C11	119.69 (19)
N1—C1—C2	123.91 (16)	C9—C10—H10	120.2
C6—C1—C2	116.54 (16)	C11—C10—H10	120.2
C3—C2—C1	121.65 (18)	C12—C11—C10	120.6 (2)
C3—C2—N4	116.19 (16)	C12—C11—H11	119.7
C1—C2—N4	122.16 (16)	C10—C11—H11	119.7
C4—C3—C2	120.32 (19)	C11—C12—C13	120.0 (2)
C4—C3—H3	119.8	C11—C12—H12	120.0
C2—C3—H3	119.8	C13—C12—H12	120.0
C3—C4—C5	119.01 (19)	C14—C13—C12	119.8 (2)
C3—C4—H4	120.5	C14—C13—H13	120.1
C5—C4—H4	120.5	C12—C13—H13	120.1
C6—C5—C4	120.9 (2)	C13—C14—C9	120.4 (2)
C6—C5—H5	119.5	C13—C14—H14	119.8
C4—C5—H5	119.5	C9—C14—H14	119.8
C7—N2—N3—C8	67.4 (2)	N3—N2—C7—O3	10.0 (3)
C7—N1—C1—C6	-35.8 (3)	N3—N2—C7—N1	-172.79 (16)
C7—N1—C1—C2	146.84 (18)	C1—N1—C7—O3	-12.5 (3)
N1—C1—C2—C3	179.25 (18)	C1—N1—C7—N2	170.32 (17)
C6—C1—C2—C3	1.8 (2)	N2—N3—C8—O4	7.0 (3)
N1—C1—C2—N4	-1.2 (2)	N2—N3—C8—C9	-171.28 (16)
C6—C1—C2—N4	-178.62 (16)	O4—C8—C9—C14	23.4 (3)
O1—N4—C2—C3	1.8 (2)	N3—C8—C9—C14	-158.26 (18)
O2—N4—C2—C3	-178.46 (17)	O4—C8—C9—C10	-153.41 (19)
O1—N4—C2—C1	-177.80 (17)	N3—C8—C9—C10	24.9 (2)
O2—N4—C2—C1	2.0 (2)	C14—C9—C10—C11	0.0 (3)
C1—C2—C3—C4	-0.4 (3)	C8—C9—C10—C11	176.84 (17)
N4—C2—C3—C4	180.00 (16)	C9—C10—C11—C12	0.2 (3)
C2—C3—C4—C5	-1.4 (3)	C10—C11—C12—C13	0.1 (3)
C3—C4—C5—C6	1.8 (3)	C11—C12—C13—C14	-0.7 (4)
C4—C5—C6—C1	-0.4 (3)	C12—C13—C14—C9	1.0 (4)
N1—C1—C6—C5	-178.97 (17)	C10—C9—C14—C13	-0.6 (3)
C2—C1—C6—C5	-1.4 (3)	C8—C9—C14—C13	-177.6 (2)

Hydrogen-bond geometry (\AA , $^\circ$)

<i>D</i> —H \cdots <i>A</i>	<i>D</i> —H	H \cdots <i>A</i>	<i>D</i> \cdots <i>A</i>	<i>D</i> —H \cdots <i>A</i>
-------------------------------	-------------	---------------------	----------------------------	-------------------------------

supplementary materials

N2—H2A···O3 ⁱ	0.80 (2)	2.10 (2)	2.844 (2)	154.8 (18)
N3—H3A···O4 ⁱⁱ	0.90 (2)	1.95 (2)	2.835 (2)	167 (2)
N1—H1···O2	0.83 (2)	2.13 (2)	2.640 (2)	119.8 (17)
N1—H1···O3 ⁱ	0.83 (2)	2.32 (2)	2.987 (2)	138.7 (19)

Symmetry codes: (i) $x-1, y, z$; (ii) $x, -y+1, z+1/2$.

Fig. 1

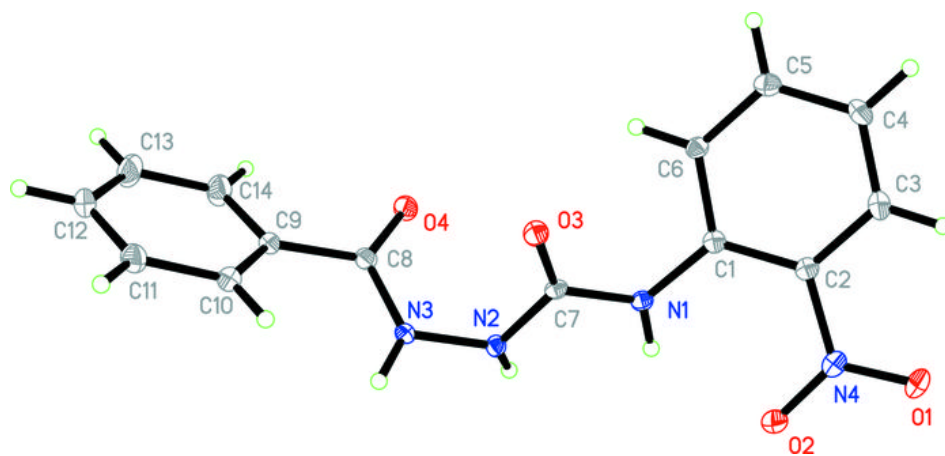


Fig. 2

